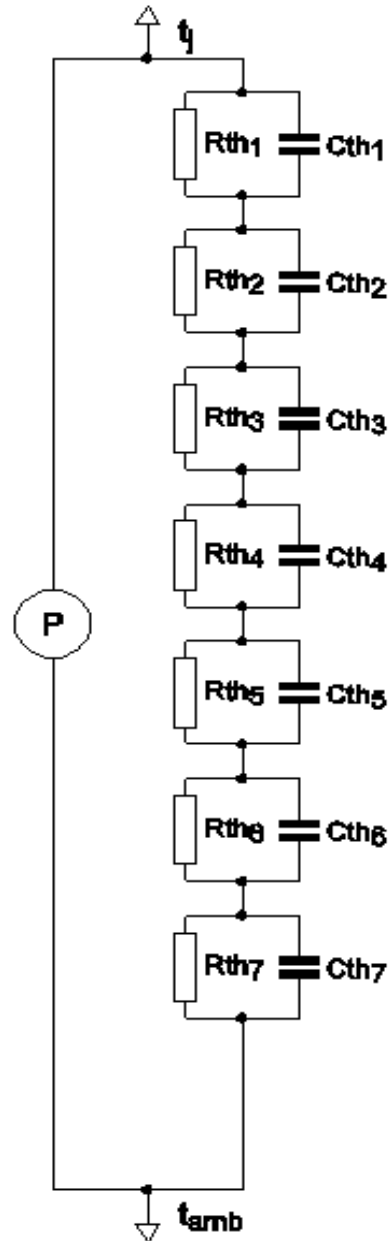


SPICE thermal model

PSMN3R0-30YLD

Symbol	Parameter	Conditions	Min	Typ	Max	Unit
$R_{th(j-mb)}$	thermal resistance from junction to mounting base		-	-	1.64	K/W

C_{th1}	1.007E-04 F
C_{th2}	1.242E-04 F
C_{th3}	2.282E-04 F
C_{th4}	1.259E-03 F
C_{th5}	3.513E-03 F
C_{th6}	1.286E-02 F
C_{th7}	3.981E-02 F
R_{th1}	1.187E-03 Ω
R_{th2}	9.763E-03 Ω
R_{th3}	3.992E-02 Ω
R_{th4}	8.621E-02 Ω
R_{th5}	2.641E-01 Ω
R_{th6}	9.374E-01 Ω
R_{th7}	3.015E-01 Ω



Part: PSMN3R0-30YLD
 Date: 17/11/2015
 Model Rth 1.64 K/W